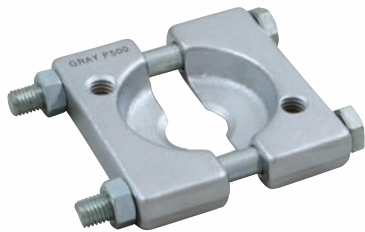


PULLERS



Bearing Separator

Part No.	Description	Threads	Weight
P500	1/4" - 15/16" capacity	5/16" - 18	0.6 lb.

Can be used with No. 995, 999A and PO10A



Pulley Pulling Attachment

Part No.	Description	Threads	Weight
P507	1 3/4" - 5 7/8" capacity	5/8" - 18	4.3 lb.

Can be used with No. P312, 1002, PO12, 1004 and PO12L



Bearing Separator

Part No.	Description	Threads	Weight
P509	1/2" - 9" capacity	5/8" - 18	12.5 lb.

Can be used with No. 1003, 1006, PO14 and PO17



Bearing Separator

Part No.	Description	Threads	Weight
P501	0" - 2 1/4" capacity	7/16" - 20	1.4 lbs.

Can be used with No. 1001, PO11, 999LA, PO13A or P309

Part No.	Description	Threads	Weight
P503	0" - 4 1/4" capacity	5/8" - 18	5.5 lbs.

Can be used with No. 1002, PO12, 1004, PO12L